

INPUT CHARACTERISTICS:**R1Z-6400P**

- VOLTAGE: 90 ~ 264 VAC FULL RANGE
- FREQUENCY : 47 ~ 63 Hz
- INPUT CURRENT: 8.0 / 5.0 A FOR 115 / 230 VAC
- INRUSH CURRENT: 60A / 80A MAX. FOR 115 / 230 VAC PER POWER MODULE

OUTPUT CHARACTERISTICS:

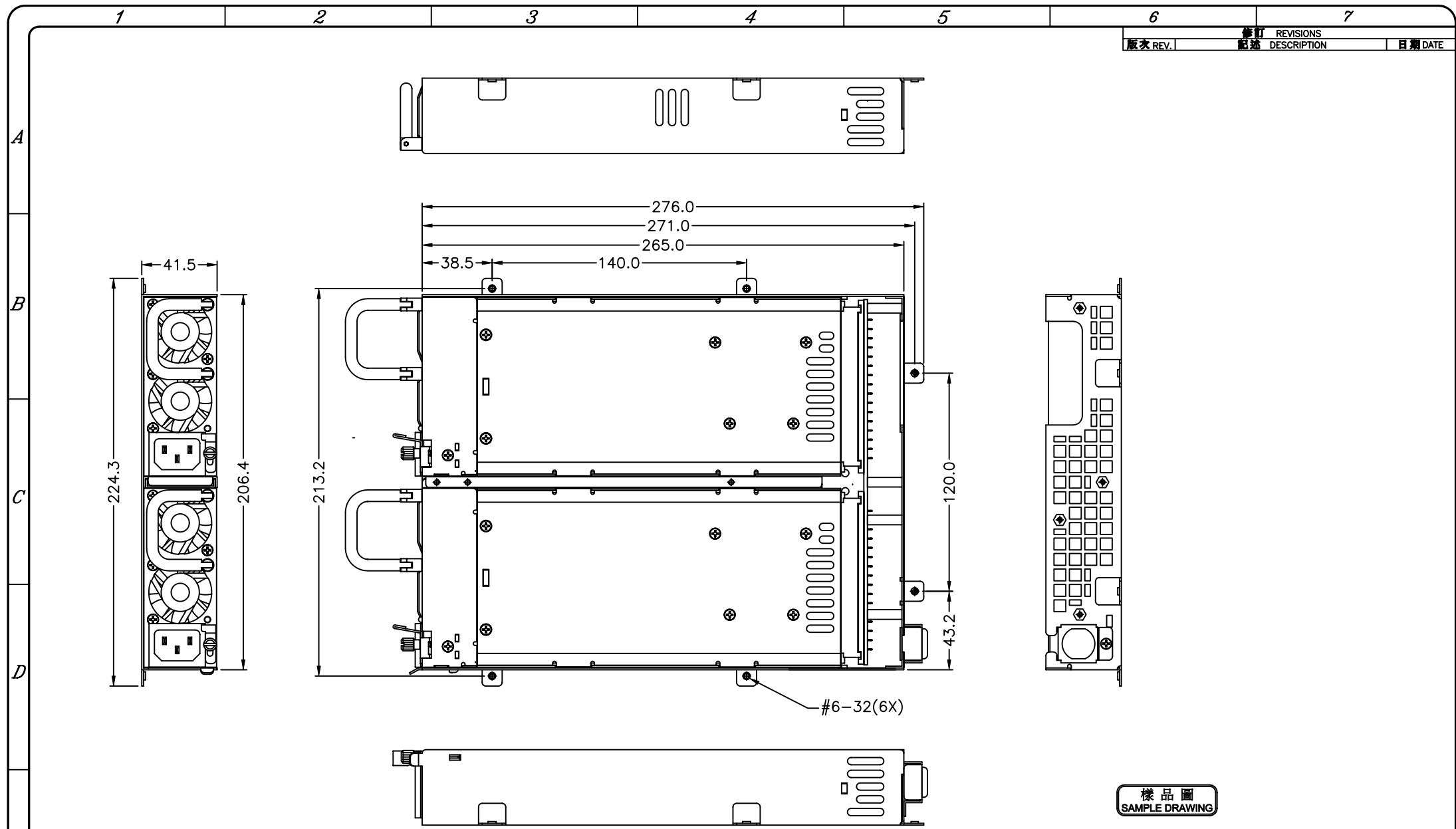
OUTPUT VOLTAGE	OUTPUT CURRENT			REGULATION		OUTPUT
	MIN.[A]	MAX.[A]	PEAK(A)	LOAD	LINE	RIPPLE & NOISE MAX. [P-P]
5V	3.0	25		± 5%	± 1%	50mV
12V	2	28		± 7%	± 1%	100mV
-5V	0.1	0.5		±10%	± 1%	150mV
-12V	0.1	0.8		±10%	± 1%	150mV
3.3V	1.0	20		± 5%	± 1%	50mV
+5VSB	0.1	2.0		± 5%	± 1%	50mV

REMARKS: TOTAL POWER OF +5V AND + 3.3V NOT EXCEED 175W

TOTAL +5V AND 3.3V AND 12V POWER NOT EXCEED 384 W

- TEMPERATURE RANGE : OPERATING 0°C --- 40°C, STORAGE -20°C --- 70°C
- HOLD UP TIME: 16 ms MINIMUM AT FULL LOAD & 90 VAC INPUT VOLTAGE
- DIELECTRIC WITHSTAND: INPUT / OUTPUT 1500 VAC FOR 1 MINUTE
INPUT TO FRAME GROUND 1500 VAC FOR 1 MINUTE
- EFFICIENCY: 63% TYPICAL, AT FULL LOAD
- POWER GOOD SIGNAL: ON DELAY 100 ms TO 500 ms, OFF DELAY 1 ms
- OVER LOAD PROTECTION: 110 ~ 160% MAX.
OVER VOLTAGE PROTECTION:
+5V → 5.7V ~ 6.7V, 3.3V → 3.7 ~ 4.2V, 12V → 13.0 ~ 15V
- SHORT CIRCUIT PROTECTION : SHUT DOWN
- EMI NOISE FILTER: FCC CLASS B, CISPR22 CLASS B
- SAFETY: UL 1950, CSA 22.2 NO/ 950, TÜV IEC 950
- REMOTE ON / OFF CONTROL
- FAULTY ALARM METHODS : LED, BUZZER, TTL SIGNAL
- HOT-SWAPPABLE / HOT-PLUGGABLE 1 + 1 REDUNDANCY FUNCTION
- BALANCE LOAD SHARING DESIGN
- REMOTE SENSING DESIGN
- ISOLATION: BUILT-IN IN THE POWER MODULE
- MEET IEC-1000-3-2 CLASS D (ACTIVE PFC)
- DIMENSION: 41.5(H) X 217.8(W) X 288 (D) mm ;
- COOLING : TWO 38 mm DC FANS IN EACH MODULE

REV. NO.		REVISIONS	DATE
版次	REV.	描述 DESCRIPTION	日期 DATE



樣品圖
SAMPLE DRAWING

 新巨企業股份有限公司
ZIPPY TECHNOLOGY CORP.
POWER DIVISION

品名: R1Z 外觀尺寸圖
MODEL NO:

料號: PART NO:
圖號: R1Z0MA01 檔號: R1Z0MA01
DRAW NO: FILE NO:

單位: mm 版次: S1 規格: A1 編號: OF
UNITS: REV. NO: SPEC.: SHEET:

容許公差:
TOLERANCES:
.XXX ±.025
.XX ±.100
.X ±.250

材料規格:
MATERIAL:

核准者:
APPROVE BY:

日期:
DATE:

日期:
DATE:

日期: JUL-11-2003
DATE:

投影法:
PROJECTION:
第三角法

TOLERANCES: ±0.5mm